
User Manual

PURAXEL·ME

Home Laser Beauty Device



www.puraxel.co.kr

“ Home Laser Beauty Device ”

New Laser Technology for Home Skincare

LASER BEAUTY DEVICE PURAXEL·ME

FX-1000

Thanks for choosing PURAXEL.

For safety, please make sure that you read and fully understand the manual and instructions before use and handle the device correctly. Keep the manual handy for future reference.

- ※ This Product is a “Skin care beauty device”.
- ※ The product design and specifications are subject to changes without prior notice for quality improvements.

Product description	Skin care beauty device
Product name	PURAXEL·ME (FX-1000)
Manufactured by	LAMEDITECH Co., Ltd.
Country of Manufacture	Republic of Korea



R·R-LMF-FX-1000
XU102702-22007A
HU10362-18026A

※ This image is designed to help you understand the product, so be sure to wear safety goggles.

Warning and Safety



CLASS 1 LASER PRODUCT INVISIBLE LASER RADIATION LASER ENERGY

- EXPOSURE NEAR APERTURE MAY CAUSE BURNS
- AVOID DIRECT EYE EXPOSURE

IEC60825-1:2014



CAUTIONS

This device uses an invisible laser beam.
Having the laser or its reflection aimed at your eyes is dangerous.
Do NOT look at the laser directly and indirectly.



Product Information

[Purpose]

This Product is a skin care beauty device used for beauty purpose, using laser and galvanic electrical current.

[Safety features]

- ① Touch Sensor : The touch sensors on laser tip should contact the skin to activate the device
- ② Laser warning label : Label attached to product to indicate laser warning

Cautions

Cautions

- Do NOT look at the laser aperture both directly and indirectly regardless of whether the device is turned ON or OFF.
 - This device uses an invisible laser beam so using the laser or its reflection aimed at your eyes is dangerous. Do NOT look at it both directly and indirectly. (The laser beam can severely damage your retina.)
 - Do NOT directly apply the laser beam to other people other than skincare purpose.
- Do NOT use the laser to the area around the heart and wounds.
- If you have an implanted medical device such as a life-support electronic device (e.g., in-vivo device, artificial heart/lung, etc.) and an electrocardiograph, do NOT use this device.
- Do NOT directly apply it to mucous membrane areas including the oral cavity and ears.
- This Product is NOT recommended for certain risk groups such as children and pregnant women.
- Do NOT use this device within a 1-meter radius around a microwave oven or shortwave.
- Do NOT use the device together with other medical devices.
- Do NOT use the device for purposes other than those specified in the Manual.
- Using the device other than for its intended purpose may result in hazardous laser radiation exposure.

User Precautions

※ If you are under one of the followings, should consult with a doctor before using the device:

- I am taking medication because of skin problems
- I have dermatitis caused by cosmetics or inflamed acne
- I have sensitive skin with allergy
- I have itchy freckles and other spots resulting from irritations
- I have taken steroid hormone medicine for a long time
- I am suffering from telangiectasia with liver dysfunction
- I have reddish and prickling skin due to excessive tanning
- I have metal, plastic, silicone and others under my skin around the target area
- I am suffering from hemophilia, heart disease or perceptual dysfunction
- I have acute disease, malignant tumor, fracture or infectious disease; around the bleeding area, eyelids, wounds or skull
- I am suffering from arrhythmia, cardio-cerebrovascular disease, high fever (cold) or malignant tumor
- I am in recovery from plastic surgery, hair loss treatment, etc

Cautions

Operational Precautions

- Check if all safety features function normally before use.
- Do NOT start the device during charging.
(Do NOT move the device with charging cradle unless it is turned off.)
- Adjust the level of the laser beam.
 - Start with low-level laser radiation based users' skin type.
- Keep any metallic objects (e.g., belt, necklace, bracelet, etc.) off from the device.
- If contaminated, wipe the device with a smooth cloth or facial tissue.
 - If necessary, use a smooth cloth or facial tissue with alcohol.
 - Cleanse the laser emission hole with a cotton swab with alcohol.
- If the device is wet, ensure that it is sufficiently dry before use.
- Use the enclosed charging adaptor.
(Using any other products may result in malfunction.)
- Do NOT arbitrarily disassemble, repair or remodel the device.
 - Make sure that the device is repaired by an authorized engineer only.
- In the event of any failure or accident during use, stop using the device immediately and contact the customer center.
- Do NOT clean the device with a flammable/adhesive material such as benzene and thinner (doing so may result in mechanical damage).
- Do NOT leave any inflammable material near the device.
- Avoid a hot/humid or dusty locations for storage.
- Keep the device out of children's reach.
- This device may cause different skin irritations depending on the user's skin condition(s). If such problem occurs, decrease the frequency of use.
- Make sure to wear on safety goggle before treatment.
- Avoid using facial cleansers and exfoliators that can cause severe irritation before and after laser treatment.
- If the skin feels tight, apply moisturizer frequently to soothe it.
- Do not rub skin if dead skins cell form after laser treatment.
- Apply sunscreen before going outdoors. Staying out of the sun to avoid sun damage.
- Avoid sauna, steam rooms, and excessive exercise to prevent severe irritation and dehydration.
- Avoid using cosmetics that have not been proven to be safe or effective.
- It is recommended to apply makeup and face wash after 12 hours of laser treatment. Treat your skin gently at least 2-3 days.
- For long-term use, adjust the laser use cycle according to the condition of your skin.

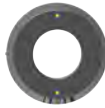
※ This Product is an skin care beauty device. It is not a medical device.
Since its safety and efficacy have been proven by a certified independent agency, it is perfectly safe to use.

Components

Basic Components



Main device 1ea
(cartridge included
and battery built in)



Circle tip
1ea



Square tip
1ea



Rectangle tip
1ea

Laser mode



Galvanic head
1ea

Galvanic mode



Charging cradle 1ea
(head/tip storage)



Safety goggles
1ea



Pouch 1ea



Charging adaptor
1ea

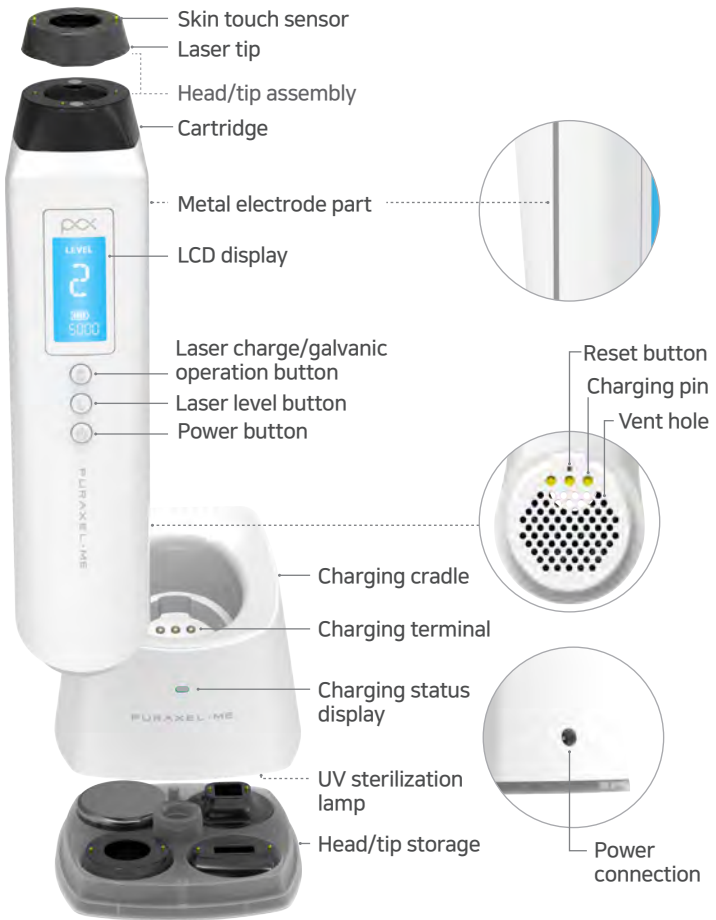


User manual
1ea

- The main device in the new package is equipped with galvanic head the product for lens protection.
- Three laser tips are included in the storage inside the charging cradle.

Components

Functions



- In addition to the charging function, the charging cradle has head/tip storage and UV sterilization functions.

Product specifications

Specifications



Main body	Laser	Er:YAG
	Laser class	Class 1
	Laser level range	1~2 Level
	Display	LCD
	Mode	Laser Mode
		Galvanic Mode
	Size	50x58x223(H)mm
	Weight	350g
	Battery	11.1V 850mAh (Lithium-Polymer Battery)
Cartridge	5,000 *	
Charging cradle	Function	Charging & head/tip UV sterilization
	Size	98x98x86(H)mm
	Weight	211g
	Charging adaptor	14VDC / 1.71A

* Cartridges are consumables that can be used up to 5,000 times and replaced with new one.

How to use

Pre-use inspection

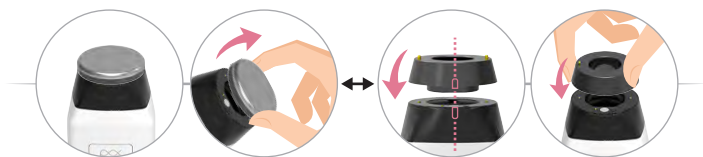
- Clean your skin before use. (Completely dry your skin after washing)
- Wear safety goggles while using laser treatment.



- For initial use, please remove head/tip protection pad in the storage of the charging cradle and cooling fan description on the main body.



- Attach and detach laser tips and galvanic head as needed.



Pull and remove the head/tip
(keep the detached head in the cradle storage)

Install the head/tip according
to the direction of arrow
(Magnet built-in)

- ※ Turn off the device when changing heads.
- ※ Charge the device sufficiently before using it.

How to use

Laser mode



This device uses an invisible laser beam, so refrain from aiming it at the direction of your eyes. Do not look at the laser directly or indirectly. (Make sure to wear enclosed safety goggles before application)



Laser tip

Assembly line

Cartridge

1 With the power off, apply laser tip in the direction of assemble line.



• Circle tip :
Wide areas such as forehead and cheeks



• Square tip :
Sensitive areas around nose



• Rectangle tip :
Narrow areas around eyes

Power button

2 Press and hold power button for 2 seconds to turn on the device.



• When the power is turned on, the last used laser level appears on the display.

• The power automatically turned off after 3minutes of waiting time.

How to use

Laser mode

3 Press level button to select the laser level.



- Repeat 1>2>1 level each time the button is pressed.
- Recommend using from the lowest level and selecting appropriate level based on skin type.

※ Skin reaction test

For initial use, check skin reaction by irradiating the laser on soft skin like forearm.

Laser level button



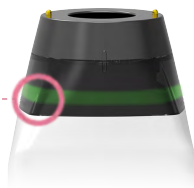
4 Charge the laser by pressing laser charge button.



- Green LED on the cartridge flashes with a notification sound while charging the laser.

Laser charge button

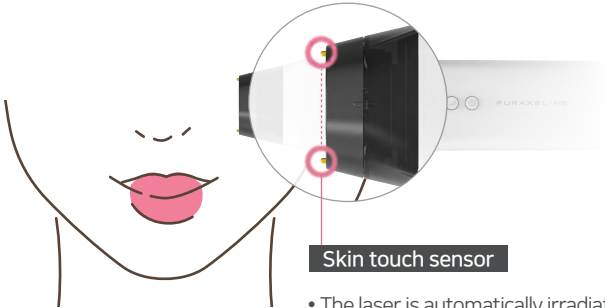
Cartridge LED blinks



How to use

Laser mode

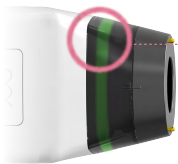
- 5** The laser is irradiated when the skin touch sensor is in close contact with the skin



- The laser is automatically irradiated with a notification sound only when the two contact sensors are in close contact with to the skin of the application area.

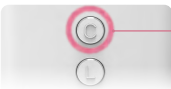
- 6** After laser irradiation, the device automatically recharged when the contact sensor is off from the skin.

- Keep the laser in close contact with the skin and repeat irradiation to the desired area.



Cartridge LED blinks(Auto recharging)

- Once the laser is charged, laser is automatically recharged up to 50 uses of laser irradiation.
- Laser recharge is manually required every 50 uses by pressing [CHARGE button].



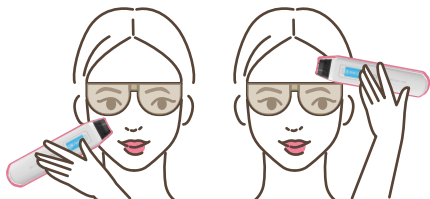
Laser charge button

- During use, a cooling fan is operated for the stable device performance.

How to use

Laser mode

- 7** Proceed laser treatment by continuously irradiating the laser on the application area such as forehead, cheeks, chin, nose and around mouth.



- Total/remaining count display and confirmation window

- The average laser shots for the whole face is 50-100 shots. The number of shots should be adjusted according to the face size and skin condition. (Do not repeat laser irradiation in the same area)



- 8** Turn off the power by pressing the power button for 2 seconds for galvanic head replacement.

Power button

- 9** Apply sufficient nutrition and moisture on the application area.



- Use ampoule-type functional cosmetics suitable for your skin type.
- The user may feel stinging because there are microholes in the skin generated by laser. (A little stinging is a normal reaction)
- Avoid using cosmetics that have not been proven to be safe or effective.
- Prepare galvanic mode to promote cosmetic absorption.

How to use

Galvanic mode



- 1** Detach the head with the power OFF and attach the galvanic head correctly.



※ Galvanic head : Galvanic is an exclusive cosmetic electrotherapy treatment for the skin to increase the absorption rate of cosmetic

- 2** Press and hold the power button to turn on the device



- Once the device is turned on, the galvanic mode is displayed on the screen.

How to use

Galvanic mode

3 Galvanic mode operates by pressing C button.



- When the galvanic operation button is pressed, the galvanic mode operates for 3 minutes with a notification sound, the galvanic indicator on the LCD window and the green LED on the cartridge blinking.

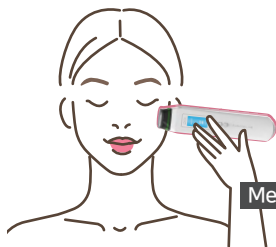
Galvanic operation button

Cartridge LED blinks



4 Roll and massage with galvanic head on forehead, cheeks, chin, nose and around mouth.

- The usage time for galvanic mode is 3minutes.
If additional time is required, press galvanic operation button once again.



Metal electrode part

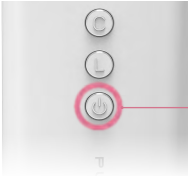


※ Galvanic operates only when the metal electrode part is gripped.

- If you continue rolling, the cosmetics are absorbed into the skin and smooth rolling may not be possible.
- If you proceed while applying additional ampoule, you can massage more smoothly.

How to use

Galvanic mode



- 5** Press and hold the power button for 2 seconds to turn off the device.

Power button

- Wipe the device cleanly after use.

Finish

- 1** Finish skin care with products such as cream and face mask.

- Apply products that contain soothing or regenerating with a cooler.



※ Cautions

- Avoid using facial cleansers and exfoliators that can cause severe irritation before and after laser treatment. Do not rub skin if dead skins cell form.
- Skin reactions such as redness, heat and stinging are normal reactions that occur after laser irradiation as the holes are created in the skin and will be recovered in 1-2 days.
- If the heat persists and it is inconvenient, the skin cooler can be used while applying additional ampoule to reduce the heat.
- If the skin feels tight, apply moisturizer frequently to soothe it. Avoid using cosmetics that have not been proven to be safe or effective.
- Apply sunscreen before going outdoors. Staying out of the sun to avoid sun damage.
- Avoid sauna, steam rooms, and excessive exercise to prevent severe irritation and dehydration.
- It is recommended to apply makeup and face wash after 12 hours of laser treatment. Treat your skin gently at least 2-3 days.
- For long-term use, adjust the laser use cycle according to the condition of your skin.

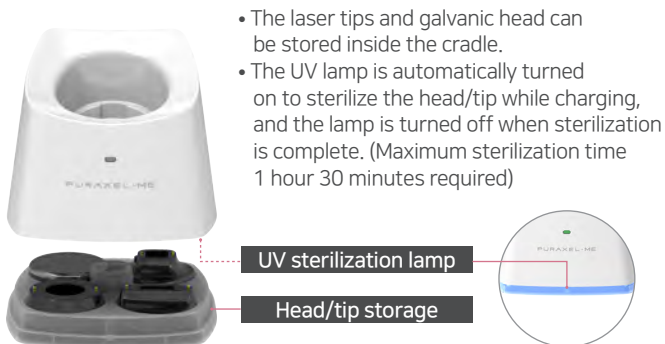
Power management

Power management

1 Battery level



2 The laser tips and galvanic head storage/sterilization function



Storage and Maintenance

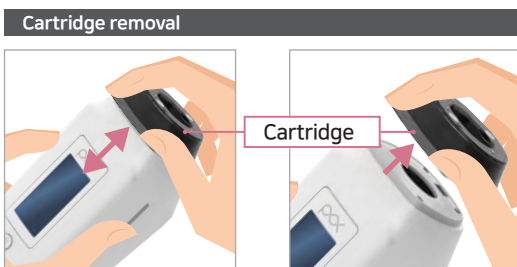
1 Storage and Maintenance

- Keep the laser irradiation part clean all the time.
- If the Device is left unused for a long time, charge the system sufficiently before use.
- Ensure to use the enclosed adapter.
- Avoid a hot/humid place for storage.
- If the Device is wet, ensure that it is sufficiently dry before use.
- Any physical impact such as throwing, rocking or dropping could result in internal damage
- Move the Device carefully.
- Do NOT expose it to direct sunlight or high/low temperature.
- Do NOT leave the Device at a humid place such as kitchen and bathroom.
- Do NOT leave the Device at a dusty place.

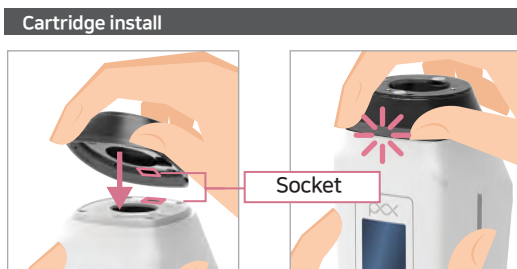
Product Management

Cartridge management

- 1 Remove the expired cartridge and replace it with a new cartridge. (extra purchase)



- Switch off the power, hold the body with one hand and pull the cartridge out with the other hand to remove it.



- Align the new cartridge into the socket and push it until it clicks into place.



※ After installing the cartridge, turn on the power and check the laser shot count setting value (5,000 times) on the LCD display before use. (Extra PURAXEL-ME cartridge and other components can be purchased at PURAXEL website)

Power button

FAQ

01 Fails to irradiate the laser shots.

The device has skin touch sensor as a safety feature.

The laser is automatically irradiated with a notification sound only when the two contact sensors are in close contact with to the skin of the application area.

02 Why does the smell and smoke come out during laser irradiation?

The smell and smoke come out from destroying water molecules in the skin and evaporating through the high energy coming out.

This is the same phenomenon that occurs from Er:Yag skin regeneration laser used in dermatology. Also, we have clinical trials and certificates that prove the safe of PURAXEL-ME.

03 Is there any consumable item?

Each cartridge includes 5,000 laser shots and the additional purchases are available on PURAXEL website.

04 How do I clean after using laser tips and galvanic heads?

Wipe the device using alcohol swap or soft cloth.

05 What is the frequency of laser irradiation when using the device?

Recommend to use PURAXEL ME once a week. For initial use, start from the lowest level and find the appropriate level for your skin.

06 How long does the battery charging time take and how many treatments can be performed when fully charged?

It takes about one and a half hour to charge and the lamp switches from red to green. Full charge battery can handle 2-3 treatments (criteria for using level 1 laser and galvanic mode)

07 What are the uses of different shaped laser tips?

Circle tip: Wide areas such as forehead and cheeks

Square tip: Sensitive areas around nose

Rectangle tip: Narrow areas around eyes

08 Is the skin touch sensor of the laser tip and the metal of the galvanic head harmless to the human body?

The contact sensor of the laser tip is harmless to the human body with gold plating, and the galvanic head is made of stainless steel, which is mainly used for medical purposes.

FAQ

09 How does the UV sterilization function work?

UV sterilization operates when the main body is placed on the charging cradle and charged. When fully charged, the green light is on and the sterilization is completed.

10 How do I manage main body and cartridge lens after treatment?

Since dust may accumulate on the lens area, store and manage with the galvanic head attached after using the product.

11 An error message appears on the LCD window and the machine does not operate.

Turn off the device, remove and re-insert cartridge. An error message appears when the cartridge is not connected to the main body correctly.

12 What is the lifetime of the device?

The main body is guaranteed up to 50,000 laser shots within 2 years, and the battery is guaranteed for 1 year. Cartridges are consumables that can be used up to 5,000 times and replaced with new one.

13 What are the symptoms and recovery time during treatment?

Skin reactions such as redness, heat and stinging are normal reactions that occur after laser irradiation as the holes are created in the skin and will be recovered in 1-2 days. (Acidic like vitamins, or alcoholic ingredients can irritate the skin, so it is recommended to use products containing moisturizing and regenerating ingredients.)

14 My face seems dry after skin care. Is it okay?

The skin may become temporarily dry because the holes are created through evaporation of moisture from the skin. Using skin booster(ampoule) with high absorption power and supplying enough moisturizing/regenerating cream helps skin regeneration.

15 What are the side effects and how to deal with it?

If redness, heat, or stinging persists for more than 2-3 days, or if allergic reactions such as itching, hives, or swelling occur, stop using the device and contact a dermatologist or customer center.

MEMO

WARRANTY

This Product is under warranty. If any defect is found, contact the store from which you made the purchase. Please have the date of purchase written on the warranty at the time of purchase.

Product Name / Classification	
Model No.	
Country of Manufacture	
Date of Purchase	
Store	
Customer	

Warranty Period and Policy

The Product is under warranty up to 50,000 times of use for two (2) year. Unless the date of purchase is applicable, the start of the warranty period begins in 3 months from the date of manufacture. The warranty period for the battery is 1 year. The cartridges are consumable items that can be purchased at PURAXEL website.

Any repairs within the warranty period shall be free of charge. However, they will be charged in one of the following cases:

- Consumer's fault, force majeure
- Use of unauthorized parts
- The Device is repaired at a place other than LAMEDITECH or the store from which you made the purchase



PURAXEL·ME

FX1000MLE_V2.01



**LAMEDITECH** LAMEDITECH Co., Ltd.

#1002, ACE High-End 6th, Beotkkot-ro 234, Geumcheon-gu, Seoul 08513 Korea
Tel: +82-2-852-7982 | Fax: +82-2-852-7983 | Web: www.puraxel.co.kr

